

POOL GUIDE

5 Easy Steps To A Clean Pool

Color-coded AquaGuard® products make it easy. See pages 2-6.

Improve Your Pool Maintenance Skills

Learn about our training classes. See page 6.

Pool Furniture In Every Style

We've got you covered. See pages 14-15.

Need Pool Care Advice From An Expert?

Call 1.800.SOS.POOL.

Visit hdsupplysolutions.com/poolwatertesting

Balanced water is critical to pool quality and swimmer comfort.

Optimum balance levels:

- pH Balance: 7.4-7.6
- Alkalinity: 80-120 ppm
- Calcium Hardness: 200-400 ppm

Why you need to balance your pool:

- To maximize chlorine effectiveness
- To prevent eye and skin irritation
- To limit pool equipment damage

STEP

Salt Pool
Compatible



Treats the following:



See pages 4-5 for troubleshooting tips.

BALANCE THE WATER



AquaGuard® 1 Gallon Muriatic Acid

- Powerful pH Reducer Helps Prevent Scaling Caused By Calcium-Based Chlorine And/Or Hard Water
- Ready To Use
- Not Available In All Regions

116608
Pkg Of 2



AquaGuard® 1 Gallon Calcium Hardness Reducer

- Reduces The Calcium Hardness Of Pool Water So That A Proper pH Balance May Be Obtained
- Reduces Scale Formation

116604



AquaGuard® 8 Lb Stabilizer Conditioner

- Shields Chlorine From The Destructive Effects Of Sunlight
- Reduces Chlorine Consumption
- Essential If Liquid Or Calcium-Based Chlorines Are Used

117943



AquaGuard® 1 Gallon Metal Out

- Prevents And Stops The Growth Of Metal Stains, Discoloration And Scale Formation
- Treats Up To 40,000 Gallons

116607



AquaGuard® 30 Lb pH Up Pail

- Quickly Raises pH And Alkalinity
- Fast-Dissolving Granular Pool Soda Ash

116600



AquaGuard® 30 Lb pH Down Pail

- Quickly Lowers pH And Alkalinity
- Fast-Dissolving Granular Pool Acid

116601



AquaGuard® 30 Lb Alkalinity Booster Pail

- Buffers Pool Water For Better pH Control
- Increases Total Alkalinity Of Pool Water And pH Of Pool Water
- Fast-Dissolving Sodium Bicarbonate

116602



AquaGuard® 25 Lb Calcium Hardness Increaser

- Prevents Corrosion Of Pool Surface And Equipment Caused By Low Calcium Levels
- Fast-Dissolving

208511

2

STEP

Chlorine makes the water clean and clear for swimmers.

Why you need to chlorinate your pool:

- Chlorine disinfects the water
- It kills both bacteria and algae
- 2.0-4.0 ppm levels are optimal

Salt Pool
Compatible



Treats the following:



See pages 4-5 for troubleshooting tips.

CHLORINATE YOUR POOL



CASE
OF 3

AquaGuard® 1 Gallon Liquid Chlorine

- Antimicrobial, Kills Algae And Bacteria
- Will Not Cloud Pool Water
- Safe For All Types Of Pools
- Easy To Use

114222



AquaGuard® 40 Lb Pool Salt

- For Use In Pools And Spas With Salt Chlorinators
- Brands May Vary By Region
- Not Available In All Markets

116038



AquaGuard® Power 99 3" 50 Lb Chlorine Tablets W/Shock

- Sanitizes And Suppresses Algae And Bacteria
- 99% Active Ingredient
- Individually Wrapped
- Slow-Dissolving For Long-Lasting Sanitation
- Jumbo 8 Oz Tablets

502074



AquaGuard® 1" 50 Lb Trichloro Chlorine Tablets

- Stabilized, Slow-Dissolving Tablets For Long-Lasting Chlorine Residual
- Premium Quality
- Manufactured To Resist Crumbling
- Ideal For In-Line Chlorinators

116611



AquaGuard® 50 Lb Dichloro All-In-One Chlorine Granules

- Will Not Cloud Water, Raise pH Or Create Calcium Deposits On Tile
- 99% Sodium Dichlor
- Super-Concentrated Formula
- Fast-Dissolving

116613



AquaGuard® 95 Lb Blended Calcium Hypochlorite

- Kills Bacteria, Destroys Organic Contaminants, Controls Algae
- 59.5% Calcium Hypochlorite
- Swimming Pool Water Oxidizer
- Great For Shocking Swimming Pool Water
- Brand May Vary By Region

114008



AquaGuard® 50 Lb Bromine Tablets For Pools And Spas

- Perfect For Indoor Pools, Spas And Tubs
- Slow-Dissolving For Controlled Release
- Sanitizes And Prevents Algae Without Chlorine Odor

116615

3 STEP

Periodic shocking removes waste materials like suntan oils, perspiration, body oils, and other organic waste.

For best results, balance pH to 7.4-7.6 before shocking.

Why you need to shock your pool:

- To bring up chlorine and free chlorine levels
- To disinfect the water
- To restore water clarity

Salt Pool Compatible



Treats the following:



See below for troubleshooting tips.

SHOCKING THE WATER

Add Super Quick Shock Now, Swim 15 Minutes Later

Use Super Quick Shock as a weekly shock treatment, and swimmers can enter the pool after just 15 minutes.



AquaGuard® 1 Lb Super Quick Shock

NEW

- Treats 12,000 Gallons Of Water
- Maintains Crystal Clear Water
- Kills Bacteria And Algae
- Dissolves In Seconds
- Improves Filtration

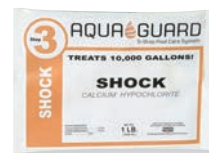
221311
Pkg Of 24



AquaGuard® 50 Lb Sodium Persulfate Non-Chlorine Shock

- Eliminates Odor And Oxidizes Organic Buildup
- Does Not Affect Chlorine Levels, So Swimmers Can Enter Pool Immediately After Application
- Helps Clarify Water And Improve Filtration

116621



AquaGuard® 1 Lb Calcium Hypochlorite Shock

- 59.5% Calcium Hypochlorite
- Swimming Pool Water Oxidizer
- Great For Shocking Swimming Pool Water
- Kills Bacteria, Destroys Organic Contaminants, Controls Algae
- Brand May Vary By Region

114009
Case Of 24

Troubleshooting Tips



CLOUDY WATER

Clarifiers (116630 and 116631) will aid in removing particles, but the source of the problem should also be determined.

1. Check filtration system for malfunction.
2. Test pH and total alkalinity and adjust if necessary. Adjust alkalinity with Alkalinity Booster (116602/116636). Adjust pH using pH Up (116600) or pH Down Dry Acid (116601) or Muriatic Acid (116608).
3. If total alkalinity and pH are correct, shock pool water with Super Quick Shock Pouch (221311) or Non-Chlorine Shock Treatment (116621) and run the pump on a longer cycle.



EYE/SKIN IRRITATION

pH is out of proper range.

1. Test pH and adjust using pH Up (116600) or pH Down Dry Acid (116601) or Muriatic Acid (116608).
2. If pH is correct, shock pool water with Super Quick Shock Pouch (221311) or Non-Chlorine Shock Treatment (116621) and run the pump on a longer cycle.



CHLORINE ODOR

Chloramines present due to inadequate levels of free chlorine.

1. Test pH and adjust using pH Up (116600) or pH Down Dry Acid (116601) or Muriatic Acid (116608).
2. Shock pool water with Super Quick Shock Pouch (221311) or Non-Chlorine Shock Treatment (116621) and run the pump on a longer cycle.



GREEN ALGAE

Caused by inadequate chlorine levels.

1. Brush algae off pool surfaces.
2. Test pH and adjust using pH Up (116600) or pH Down Dry Acid (116601) or Muriatic Acid (116608).
3. Shock pool water with Super Quick Shock Pouch (221311) or Non-Chlorine Shock Treatment (116621), using three times the normal shock dosage.
4. Run the pump on a longer cycle.
5. Treat with Green Algaecide (116625).

4 STEP

Algaecides work hand in hand with chlorine and shock treatments to prevent and remove algae and bacteria buildup.

To treat algae, you must first identify the type of algae present, and then use the task-specific algaecide to prevent or treat the problem.

When to apply algaecides:

- When visible algae is present
- As part of a routine maintenance program
- Prior to the start of pool season

Salt Pool
Compatible



Treats the following:



See below for troubleshooting tips.

SELECT ALGAE CONTROL BASED ON THE TYPE OF ALGAE

AquaGuard® 1 Gallon Algaecide And Clarifier

- Ready-To-Use
- Combination Algaecide And Clarifier For All Pool Types
- Treats Up To 53,000 Gallons (Per Gallon)
- Nontoxic, Nonfoaming

116623

Case Of 6



AquaGuard® 1 Gallon Green Algaecide

- Concentrated Formula
- Most Effective Against Green Algae
- Treats Up To 320,000 Gallons
- Nontoxic, Nonfoaming

116625



AquaGuard® 1 Gallon Phosphate Remover

- Concentrated Formula
- Eliminates Phosphates, Which Are The Food Source For Algae
- Impedes The Ability Of Algae To Grow

116627



AquaGuard® 10 Lb Black Algaecide

- Highly Concentrated Formula
- Most Effective On Black Algae
- Slow-Dissolving
- Will Not Raise pH

116628



AquaGuard® 1 Gallon 60% Algaecide

- Concentrated Formula
- Top-Selling Premium Algaecide In The Industry
- Nontoxic, Nonfoaming, Nonmetallic, Poly Blend
- Treats And Prevents All Types Of Algae

116624



AquaGuard® 1 Gallon Mustard Algaecide

- Concentrated Formula
- Effective For Treatment And Prevention Of Mustard Algae
- Treats Up To 256,000 Gallons

116626



Troubleshooting Tips



BROWN/MUSTARD ALGAE

Appears in patches. It brushes away easily, but reappears quickly.

1. Brush algae off pool surfaces.
2. Test pH and adjust using pH Up (116600) or pH Down Dry Acid (116601) or Muriatic Acid (116608).
3. Shock pool water with Super Quick Shock Pouch (221311) or Non-Chlorine Shock Treatment (116621), using three times the normal shock dosage.
4. Run the pump on a longer cycle.
5. Treat with Mustard Algaecide (116626).



BLACK ALGAE

Appears as black spots. Note: These instructions and Black Algaecide may only be used on unpainted, concrete-type pools.

1. Brush pool surfaces with wire algae brush.
2. Test pH and adjust using pH Up (116600) or pH Down Dry Acid (116601) or Muriatic Acid (116608).
3. Shock pool water with Super Quick Shock Pouch (221311) or Non-Chlorine Shock Treatment (116621), using three times the normal shock dosage.
4. Run the pump on a longer cycle.
5. Treat with Black Algaecide (116628) and use Algaecide 60% Concentrate (116624) for maintenance.



BLUE/GREEN WATER

Water looks blue/green.

1. Test pH and adjust using pH Up (116600) or pH Down Dry Acid (116601) or Muriatic Acid (116608).
2. Use Ultra Clarifier (116631) and vacuum any fallout to avoid staining.



SAFE FOR
SALTWATER POOLS

All AquaGuard® chemicals are compatible with saltwater systems.

5 STEP

Clarifiers keep your pool crystal clear by combining small particles into large ones for easy filter removal.

When to use clarifiers:

- When water is cloudy
- After algaecide treatment
- Prior to the start of pool season

Salt Pool
Compatible



Treats the following:



See pages 4-5 for troubleshooting tips.

CLARIFY THE WATER

AquaGuard® 1 Gallon Tile And Spa Cleaner

- Dissolves Scale And Oils On Ceramic, Porcelain And Fiberglass Pools
- Clings To Surfaces For Easy Cleaning
- Easy Rinse Formula

116632



Super-Concentrated
Formula Treats Up To
640,000 Gallons

AquaGuard® 1 Gallon Spa Water Defoamer

- Eliminates And Prevents Foaming In Spas When Spa Jets Are In Use
- Safe For All Types Of Spas

116634



AquaGuard® 1 Gallon Ultra Pool Water Clarifier

- Clears Cloudy Water
- Use 2 Oz Per 10,000 Gallons

116631



AquaGuard® 1 Gallon Pool Water Clarifier

- Treats Cloudy Or Discolored Water
- Settles Particles To Pool Bottom For Easy Vacuuming And Filtration

116630



AquaGuard® 1 Gallon Filter Cleaner And Degreaser

- Safe For All Types Of Filters
- Removes Grime, Oil And Organics
- Helps Restore Filter Efficiency

116633



Improve Your Pool Care Skills With Our Training Classes

Swimming Pool Maintenance Class

Learn how to professionally manage and maintain one of your property's most valuable amenities—the swimming pool. This three-hour class is designed to give you an overview of daily pool operations and attendance is free.

Topics Covered

- Chemical testing and water balance
- Filtration systems and mechanical maintenance
- Liability and safety aspects of pool management
- Chemical safety

PHTA® Certified Pool Operator® Certification Class*

Learn the skills to maintain your pool and eliminate expensive outsourcing costs. Upon successful

completion of this in-depth, two-day course, you will earn a certification that is recognized by the Pool & Hot Tub Alliance (PHTA®, formerly NSPF® and APHA®). HD Supply provides the training and proctors the exam.

Topics Covered

- Pool calculations and formulas
- Chemical dosage formulas
- Disinfection (superchlorination)
- Water chemistry and balancing
- Filtration
- Pool safety standards
- Identifying pool hazards
- Understanding federal and state codes

*Course fees apply. A passing score of 75% is required to receive certification.

ENROLL TODAY

For more information, visit hdsupplysolutions.com/training or call **1.800.431.3015, ext. 12465**.

Saltwater Pool Care

Saltwater pools rely on salt chlorine generators for sanitization, minimizing the amount of chemical and chloramine buildup in the water. AquaGuard® Balance, Clarify, Algae Control, and Shock chemicals are compatible with saltwater systems.

How To Maintain A Saltwater Pool:

- Test pool water weekly for free chlorine and pH levels
 - Free chlorine levels should be within 2.0-4.0 ppm
 - Optimal pH level is 7.4-7.6
- Use test strips monthly to test pool water for salt, alkalinity, stabilizer, and calcium
- Open and visually inspect cell every three months for maximum performance
- Ensure filter, pump, and skimmer are clean
- Make sure water flow is at optimal levels



All AquaGuard® chemicals are compatible with saltwater pools.



AQUAGUARD®
5-Step Pool Care System



AQUAGUARD®

AquaGuard® 40 Lb Pool Salt

- For Use In Pools And Spas With Salt Chlorinators
- Brands May Vary By Region
- Not Available In All Markets

116038



PENTAIR

Pentair Power Center For Intellichlor IC40 And IC60 Cells

- 110 Vac Or 220 Vac Wiring
- Certified To UL 1081 Standard For Safety And NSF Approved

Mfg #520556

⚠ CA Residents, See Warning 1

123160



PENTAIR

Pentair Intellichlor Salt Chlorinator Cell

- Intellichlor Salt Chlorinator Uses Common Table Salt To Produce All The Chlorine A Pool Needs Safely, Effectively, And Automatically
- Push-Button Operation And Easy-To-View Displays Enable Fast Checking Of Salt Levels, Cell Cleanliness, Sanitizer Output, And Water Flow
- Automatic Shutoff Feature Protects The Unit And Prolongs Cell Life Under Low Water Temperature Conditions

⚠ CA Residents, See Warning 1

IC40 Cell

Mfg #520555

123159

IC60 Cell

Mfg #521105

123158

⚠ WARNING 1: Cancer and reproductive harm - www.P65Warnings.ca.gov.

WATER TESTING

Water Testing

We recommend testing commercial pools daily. Be sure to test pH levels, chlorine, total alkalinity, calcium hardness, and more. Enter your results into My Pool Testing™, our online tool, for product recommendations and dosing instructions: hdsupplysolutions.com/poolwatertesting

Recommended Levels:

- pH: 7.4-7.6
- Chlorine: 2.0-4.0 ppm
- Total Alkalinity: 80-120 ppm
- Calcium Hardness: 200-400 ppm

Test Kit Storage Tips

Test kit reagents typically last only one season and cannot be mixed with another test kit. Be sure to store in a cool, dark location for longer shelf life.



Taylor® 2 Oz Pool Test Kit

- DPD
- Tests For Free And Total Chlorine, Bromine, pH, Acid/Base Demand, Total Alkalinity, Calcium Hardness And Cyanuric Acid

114219



Taylor® Service Complete K-2006C FAS-DPD Chlorine Test Kit

- 3/4 Oz Reagents
- DPD
- Free And Total Chlorine, Bromine, pH, Acid And Base Demand, Calcium Hardness, Total Alkalinity And Stabilizer Levels
- Commonly Used By Service Techs, Commercial Pool Operators And Health Department Officials

118031



Taylor® Commercial Pool Inspector's Test Kit

- 3/4 Oz Reagents
- DPD
- Tests For Free And Total Chlorine, pH, Acid/Base Demand And Cyanuric Acid
- Commonly Used By Health Inspectors For Public Pools/Spas

111316



Lamotte ColorQ Pro 7 Test Kit

- Features A Photometer That Gives You A Digital Reading Of Test Results
- Water-Resistant Carrying Case Provided
- Tests Free Chlorine, Total Chlorine, Bromine, pH, Alkalinity, Calcium Hardness, And Cyanuric Acid
- Uses Liquid Reagents For All Test Factors Except Cyanuric Acid, Which Uses Tablets

706572



Lamotte ColorQ Pro 7 Test Reagent Refill Kit

- Includes One 30 mL Bottle Of DPD 1a Liquid Reagent For Free Chlorine, One DPD 1b Liquid Reagent For Free Chlorine
- DPD 3 Liquid Reagent For Total Chlorine, pH Liquid Reagent For pH
- Alkaline Liquid Reagent For Total Alkalinity, CH2 Liquid Reagent For Calcium Hardness
- Also Includes CH1 Liquid Reagent For Calcium Hardness, CYA Testabs For Cyanuric Acid And 5 mL Color Q 6 Test Tubes

706573



Taylor® 2 Oz Reagents

- | | |
|--|--|
| 114622
R-0002-C,
Reagent #2 DPD | 114621
R-0001-C,
Reagent #1 DPD |
| 114624
R-0004-C,
Phenol Red #4 | 114633
R-0013-C,
Cyanuric Acid |



Taylor R-0870-I, DPD Powder

- DPD Powder Chlorine Test
- 10 Grams

114265



Clorox Pool And Spa 6-Way Test Strips

- Tests Total Chlorine, Free Available Chlorine/Bromine, pH, Total Alkalinity, Total Hardness, Stabilizer

114119
Pkg Of 50



POOL CLEANING & SAFETY PRODUCTS



More Than 800 Of These Products Available Online

PART #	DESCRIPTION
A 114109 <small>△ CA Residents, See Warning 1</small>	Leaf Skimmer - Aluminum Frame Skimmer With Plastic Guard - Quick Lock Handle Attaches To Any Standard Pole
B 114160 <small>△ CA Residents, See Warning 2</small>	Leaf Rake - Aluminum Frame Skimmer With Plastic Guard - Quick Lock Handle Attaches To Any Standard Pole
C 114285 <small>△ CA Residents, See Warning 2</small>	Commercial Leaf Rake - Heavy-Duty Aluminum Frame Skimmer With Plastic Guard - Heavy-Gauge Screen - Quick Lock Handle Attaches To Any Standard Pole
D 114140 <small>△ CA Residents, See Warning 1</small>	18" Curved Metal Back Wall Brush - 1-1/2" Polypropylene Bristles - Quick Lock Handle Attaches To Any Standard Pole
E 116002 <small>△ CA Residents, See Warning 1</small>	10" Stainless Steel Algae Pool Brush
F 114200 <small>△ CA Residents, See Warning 2</small>	9" Professional Vacuum Head - Flexible Construction Allows It To Hug The Curves Of Pool Walls And Floor - Balanced And Weighted To Keep Vacuum Head Submerged - 12 Polyurethane Ball Bearing Wheels - Quick-Lock Handle Fits Any Standard Telescoping Pole - Use With 1-1/2" Vacuum Hose
G 114175 <small>△ CA Residents, See Warning 2</small>	Standard Anodized Aluminum Telescoping Pole - Adjusts From 8 To 16' - Nylon Locking Device - Vinyl Handle Grip
H 114120	1-1/2" x 45' Deluxe Floating Vacuum Hose - UV Resistant - Lightweight - Leakproof Welded End Cuff - Crushproof - Swivel Cuff Rotates At Vacuum Head
I 114116 <small>△ CA Residents, See Warning 1</small>	Swivel Wheel Leaf Bagger - Picks Up Leaves From Bottom Of Pool - Includes An Extra Large Polypropylene Bag - Brass Hose Connection For Added Durability
J 114171	8" Professional Thermometer - Combination Sink Or Float Thermometer - 36" Leash With Anchor Plate - Shatterproof Magnifying Lens - °F And °C Scales
K 202318 <small>△ CA Residents, See Warning 4</small>	Dolphin Wave 60 Robotic Pool Cleaner - 60' Patented Swivel Cable - Ideal For Pools Up To 50 Feet - Top Load Fine And Ultra Fine Filters Included - Scrubs Floors, Wall And Waterline Drive System: Clever Clean Coverage - Remote Ready - Hands Off Cleaning With Plug And Play Operations - Cleaner Has 2 Brushes - Superior Scrubbing And Filtering Capabilities - Cleaning Cycles 1 Or 2.5 Hours Caddy Included - Full Filter Indicator - Cleaning Models: Quick And Standard
L 202320 <small>△ CA Residents, See Warning 4</small>	Dolphin Wave 80 Robotic Pool Cleaner - 70' Patented Swivel Cable - Ideal For Pools Up To 68 Feet - Top Load Fine And Ultra Fine Filters Included - Scrubs Floors, Walls And Waterline - Drive System: Clever Clean Coverage - Remote Control With Delay Start - Hands Off Cleaning With Plug And Play Operations - Cleaner Has 3 Brushes - Superior Scrubbing And Filtering Capabilities - Cleaning Cycles Include 1.5 2.5 3.5 Hours - Caddy Included - Full Filter Indicator - Cleaning Models: Quick Standard Enhanced
M 166998 <small>△ CA Residents, See Warning 2</small>	23 - 24" Life Ring - USCG Approved - White
N 114275	60' Heaving Line With Metal Hanger - Mildew Resistant Polypropylene Rope - Use With 166998 Life Ring
O 114164 <small>△ CA Residents, See Warning 3</small>	Pool Life And Rescue Hook - Use With 167064 Fiberglass Pool Pole - Does Not Include Nuts And Bolts
P 167064 <small>△ CA Residents, See Warning 3</small>	16" Rigid Fiberglass Pool Pole - 1-1/4" Outside Diameter
Q 114195	5 x 9" Blue/White Float - Fits 3/4" Rope - Unsinkable Polyethylene
R 116003	50' Blue/White Pool Rope - 3/4" Diameter Rope - Rope Hooks (114280) Not Included
S 114280	Socket Type Hook With Rope Cleat - For 3/4" Pool Rope - Use With 116003 Rope
T 114194	Sure-Step® Pool Ladder Tread - 18"W - Stainless Steel Bottom With Gray Top

WARNING 1: This product can expose you to chemicals including lead, which [is] are known to the State of California to cause cancer, birth defects, or other reproductive harm. For more information go to www.P65Warnings.ca.gov.

WARNING 2: This product can expose you to chemicals including Di(2-ethylhexyl)phthalate (DEHP), which [is] are known to the State of California to cause cancer and birth defects or other reproductive harm. For more information go to www.P65Warnings.ca.gov.

WARNING 3: Cancer and reproductive harm - www.P65Warnings.ca.gov.

WARNING 4: This product can expose you to chemicals which is known to the State of California to cause cancer, or birth defects, or other reproductive harm. For more information, go to www.P65Warnings.ca.gov.

POOL CLEANING PRODUCTS & ACCESSORIES

Exclusive 2-Year Manufacturer's Warranty For Pentair Pumps



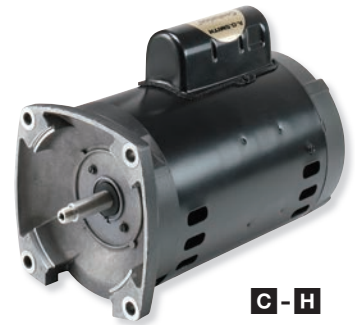
Complete Pump Assemblies

POOL PUMPS

PART #	DESCRIPTION
A 502544 <small>CA Residents, See Warning 1</small>	Pentair® IntelliFlo® Variable Speed Pool Pump - High Tech Motor Reduces Noise And Vibration For Greater Efficiency And Longer Life - Variable Speed Technology Provides Significant Energy Efficiency - Provides Energy Savings Compared With Traditional Pumps
B 116906 <small>CA Residents, See Warning 1</small>	Pentair® IntelliFlo® Vacuum Release System And Pump - ASME/ANSI A112.19.17 (VGB) Compliant - Detects Blockage And Automatically Shuts Off Pump - Variable Speed Pump Achieves 30-90% Energy Savings - One Size Fits All 0.5 HP To 3.0 HP - Advanced Technology Saves Lives And Saves Money

MOTOR REPLACEMENTS

PART #	UP-RATED SQUARE FLANGE POOL REPLACEMENT MOTOR
C 114198	1 HP Square Flange Pool Replacement Motor - Up-Rated - Single Phase - 115/230 Volt - Service Factor Of 1.25 - Total Output=1.25 HP - Mfg #B853
D 114199	1-1/2 HP Square Flange Pool Replacement Motor - Up-Rated - Single Phase - 115/230 Volt - Service Factor Of 1.1 - Total Output=1.65 HP - Mfg #B854
E 114204	2 HP Square Flange Pool Replacement Motor - Up-Rated - Single Phase - 230 Volt - Service Factor Of 1.1 - Total Output=2.20 HP - Mfg #B855
PART #	FULL-RATED SQUARE FLANGE POOL REPLACEMENT MOTOR
F 114340	1 HP Square Flange Pool Replacement Motor - Full-Rated - Single Phase - 115/230 Volt - Service Factor Of 1.65 - Total Output=1.65 HP - Mfg #B848
G 114345	1-1/2 HP Square Flange Pool Replacement Motor - Full-Rated - Single Phase - 230 Volt - Service Factor Of 1.5 - Total Output=2.25 HP - Mfg #B849
H 114205	2 HP Square Flange Pool Replacement Motor - Full-Rated - Single Phase - 230 Volt - Service Factor Of 1.3 - Total Output=2.60 HP - Mfg #B748



C - H

IMPORTANT NOTE: Always replace the pump seal (114528) when installing a new motor to avoid severe damage to the system.

FOR YOUR INFORMATION

Up-Rated? Full-Rated?

Which one do you choose? Motors are rated to operate to listed capacity. When replacing a pump and/or motor on an existing system, it is important to use the correct replacement. That can easily be accomplished by checking your currently installed equipment. Find the motor's nameplate. Locate the HP (horsepower) shown on the nameplate and multiply that by the SF (service factor) shown on the nameplate. The HP times the SF of the replacement motor must be equal to (or greater) than HP times SF of the motor being replaced.

Total Output = Nameplate Horsepower x Service Factor

FYI-0390

WARNING 1: Cancer and reproductive harm - www.P65Warnings.ca.gov

Aqua Creek 350 Lb Aqua Creek Ranger Pool Lift Chair

- 350 Lb Weight Capacity; Lift Is 130 Lb
- Features A Setback Range From 4 To 9 Inches, Giving It The Versatility Needed For Successful Installation In A Variety Of Pools
- 27" Lowering Depth Makes For Easy Transfers
- Low-Profile Design And Small Footprint
- ADA Compliant

530366



S.R. Smith aXs2 300 Lb Pool Lift W/ Locking Anchor

- 360° Rotation For Transfer Safety And Flexibility
- LiftOperator® Intelligent Controller With 24V Battery
- Full Range Of Operation From Handset And Control Box
- Powder-Coated Stainless Steel And Aluminum Construction

114814



S.R. Smith PAL 300 Lb Portable Aquatic Lift

- PAL Portable Aquatic Lift Armrest Assembly Included
- Perfect For Any Commercial Aquatic Facility
- 300 Lb Lifting Capacity
- Completely Portable And Easy To Move
- Conveniently Stores Away When Not In Use
- Powered By A 24 Volt Rechargeable Battery

114635



S.R. Smith Splash 300 Lb Pool Lift W/ Locking Anchor

- Third-Party Tested & Verified ADA Compliant
- 360° Rotation For Transfer Safety And Flexibility
- LiftOperator® Intelligent Controller With 24V Battery
- Full Range Of Operation From Handset And Control Box
- Powder-Coated Stainless Steel And Aluminum Construction

114815



ADA Pool Lifts

We carry ADA-compliant pool lifts from the leading national brands, including S.R. Smith and Aqua Creek.

ADA Regulations:

- ADA requires an accessible means of entry or exit for people with disabilities. (This is a requirement for hospitality properties.)
- Pools with less than 300 linear feet of pool wall must provide one means of access.
- Pools with more than 300 linear feet of pool wall must provide two means of access.
- Any pool open to the public must comply with ADA pool lift regulation.

Maintenance Tips

Routine lift maintenance and cleaning are essential for ensuring accessibility. Be sure to:

- Check and charge battery daily
- Test for normal operation
- Inspect for damage
- Clean seat, lift, etc. regularly
- Lubricate all gears monthly
- Inspect cable connections monthly
- Use a lift cover when not in use and avoid storing lift near pool chemicals

Source: https://www.ada.gov/pools_2010.pdf

POOL SUPPLIES

HENRY

1 Lb Henry® Underwater Tile Repair

- Use For Underwater Tile Repair In Swimming Pools And Spas
- Allows For Repairs To Be Done Without Draining The Water
- 24-Hour Dry Time
- Use With All Tile Types
- Covers Approximately 2 Sq Ft

⚠ CA Residents, See Warning 1

807017



INSL-X

Insl-X 1 Gallon Pool Waterborne Paint, White

- Self-Priming Pool Paint
- Can Be Applied To Damp Surfaces, Dries Quickly For Recoating
- Resists Mildew, Algae, Fresh And Salt Water, And Suntan Oils
- 1 Gallon Covers Approximately 250-300 Sq Ft, Semi-Gloss Finish
- Environmentally Friendly Low-VOC

⚠ CA Residents, See Warning 2

230811



INSL-X

Insl-X 1 Gallon Pool Waterborne Paint, Ocean Blue

- Self-Priming Pool Paint
- Can Be Applied To Damp Surfaces, Dries Quickly For Recoating
- Resists Mildew, Algae, Fresh And Salt Water, And Suntan Oils
- 1 Gallon Covers Approximately 250-300 Sq Ft, Semi-Gloss Finish
- Environmentally Friendly Low-VOC

⚠ CA Residents, See Warning 2

230801



Access Lighting Port Nine Martini LED Semi-Flush Brushed Steel Finish

- 1 X 9 W Solid State Lighting Dedicated LED (Included)
- 8" Dia X 11" H
- Damp Location
- Dimmable

⚠ CA Residents, See Warning 3

230897



R-40 500 Watt Clear Swimming Pool Bulb

- 130 Volt
- Medium Base
- 2,000 Average Hour Life
- 5" Diameter

310166



Universal Pool Light Adapter Ring

- #500P Model Adapts To Same Lights That Fit All 500, 500B And 500C Models

- White

170008



Blue Center Stripe Pool Towel

- 9.8 Lb/Dozen
- Cam Border
- 100% Ring-Spun Cotton Construction
- Hemmed On All Four Sides

Pkg Of 12

206092

- 22 x 44"
- 6 Lb/Dozen

502780

- 24 x 50"
- 9.8 Lb/Dozen



24 x 50" 1888 Mills® Waves Ribbed Pool Towel White With Blue Border

- 10.5 Lb/Dozen
- Cam Border
- 100% Cotton
- Hemmed On All Four Sides

761458

Pkg Of 60



Robotic Vacuums Available Online



⚠ WARNING 1: This product can expose you to chemicals including Silica, crystalline, which [is] are known to the State of California to cause cancer. For more information go to www.P65Warnings.ca.gov. ⚠ WARNING 2: Cancer and reproductive harm www.P65Warnings.ca.gov. ⚠ WARNING 3: This product can expose you to Ethyl Benzene, which is known to the state of California to cause cancer. For more information go to: www.P65Warnings.ca.gov.

POOL SIGNS & PASSES

Pool Sign "Swimming Pool Closed"

- Heavy-Duty Polyethylene
- 12 x 18"

167125



Pool/Spa Safety Sign "Pool Rules"

- Heavy-Duty Plastic
- 28 x 20"
- Complies With State Of Florida Regulations

817955



Pool Sign "No Glassware Allowed In Pool Area"

- Heavy-Duty Polyethylene
- 14 x 10"

167120



Pool/Spa Safety Sign "Warning No Lifeguard On Duty"

- Heavy-Duty Plastic
- 20 x 28"

817954



Pool/Spa Safety Sign "NOTICE Pool/Spa Illness"

- Heavy-Duty Polyethylene
- 20 x 14"

817956



Pool/Spa Safety Sign "Caution! No Diving!"

- Heavy-Duty Polyethylene
- 14 x 20"

817952



Pool/Spa Safety Sign "No Pets Allowed in Pool Area"

- Long-Lasting, Heavy-Duty, Rustproof .080" Aluminum
- 18 x 12"

⚠ CA Residents, See Warning 1

293400



Pool/Spa Safety Sign "Pool Rules"

- Heavy-Duty Plastic
- 28 x 20"
- Complies With State Of California Regulations

817956



Custom Pool Pass Tags

- Bright Colors Identify Residents Quickly, Have Different Colors For Residents and Guests
- Sold In Packs Of 100

⚠ CA Residents, See Warning 2

Red
272239

Green
272048

Blue
271909



Pool Pass

- Quickly Identifies Pool Members
- Laminated Plastic Material Won't Chip, Fade Or Peel
- Sold In Packs Of 100



Paradise
272295

Palm Trees
272169

Bubbles
735936

Stock Pool Pass Bracelets

- Silicone Wristbands Are Flexible And Comfortable
- Debossed "Pool Pass" Never Wears Off
- Highly Visible As Proof Of Membership
- Adult Size
- 8L x 1/2W x 1/16" D
- Sold In Packs Of 100

PART #	COLOR
116724	Blue
116726	Green
116728	Orange
116730	Red
116732	White
116734	Pink
116736	Yellow



⚠ WARNING 1: This product can expose you to chemicals including Phenyl glycidyl ether, which is [are] known to the State of California to cause cancer, and Methanol, which is [are] known to the State of California to cause birth defects or other reproductive harm. For more information go to www.P65Warnings.ca.gov. ⚠ WARNING 2: Cancer and reproductive harm www.P65Warnings.ca.gov.

POOL & PATIO FURNITURE



Sunset Collection's Square Tables And Stacking Armchairs



Grosfillex® Bahia Chaise Lounge

- Twice As Resistant To UV Degradation As Ordinary Resin Chaises
- Rated To 300 Lb Resistance To Breakage Under Static Load
- Recessed Rollaway Wheels
- 4-Position Adjustable Back; Stackable

Pkg Of 6



762002
White

762057
Sandstone

Grosfillex® Pacific Stackable Chair

- Solid One-Piece Molded Construction; Fanback Design
- Stackable; Glossy Finish

Pkg Of 4



762000
White

762054
Sandstone

Grosfillex® Ibiza 46" Round Table

- Tulip Resin Base With Broad Span For Increased Stability
- 46" Dia x 29"H



762001
White

763278
Sandstone

Grosfillex® Sling Lounge Chair

- Microban® Textilene Fabric Dries Quickly And Retains Its Good Looks With Its Anti-UV And Anti-Bacterial Properties
- Easily Replaceable Textilene Sling

Pkg Of 4



116570
Gray Sling/Volcanic Black Frame

116569
Gray Sling/Platinum Gray Frame

Grosfillex® Sling Stacking Armchair

- Made Of Grosfillex Proprietary Technopolymer With Air Molding Technology (AMT) To Provide Weather Resistance And Durability With The Strength Of Metal.
- Microban® Anti-Microbial Treatment Slings To Resist Mold & Mildew.
- Stacks For Easy Storage

Pkg Of 4



220071
Gray Sling/Volcanic Black Frame

220009
Gray Sling/Platinum Gray Frame

Grosfillex® 36" Sunset Square Sunset Table

- Made Of Durable, Uniquely Finished High-Pressure Laminate Sheet For A Lasting Dramatic Effect
- Umbrella Hole With Protective Ring And Plug For Standard 1-1/2" Umbrella Pole
- Leg Levelers For Uneven Surfaces
- Nylon Footpads To Resist Wear



220076
White Top/Glacier White Legs

220078
Granite Top/Platinum Gray Legs

POOL & PATIO FURNITURE

PUSH-UP UMBRELLAS

Grosfillex

Grosfillex® 9' Market Umbrella

- Two-Piece Construction
- 1-1/2" Dia Kempas Wood Pole With Brass Connector
- Umbrella Components Made Of Reinforced Resin Composite For Extra Strength And Durability
- Meets Or Exceeds ASTM G53.96 Performance Standards For Commercial Outdoor Furniture Fabric



762034 Pacific Blue Pacific Blue

762033 Forest Green Forest Green

Grosfillex® 7.5' Windmaster Umbrella Khaki

- Built Better To Sustain The Unpredictable Abuses Of The Wind
- Heavy Duty Aluminum Pole For Extra Strength
- Replaceable Fiberglass Ribs - Bends But Won't Break
- 5-Year Limited Fade Warranty On Fabric, 3-Year Replacement Warranty On Fiberglass Ribs



445675 Khaki Khaki

445676 Pacific Blue Pacific Blue

445677 Navy Navy Blue

445678 Forest Green Forest Green

445681 Taupe Taupe

445682 Turquoise Turquoise

CRANK/TILT UMBRELLAS



Fiberbuilt™ 7.5' Crank Garden Umbrella, Tilt

- Flexible Fiberglass Ribs
- Nylon Joints, Hubs, Finials And End Tips
- Powder Coated Finish
- Valance Style Canopy
- Vinyl Coated Weave Canopy
- 1-Year Limited Warranty



753119 Burgundy Burgundy

735703 Pacific Blue Pacific Blue

735702 Beige Beige

735704 Forest Green Forest Green

753118 Red Red

753123 Black Black

Fiberbuilt™ 9' Crank Market Umbrella, Tilt

- Flexible Fiberglass Ribs
- Nylon Joints, Hubs, Finials And End Tips
- Powder Coated Finish
- Market Style Canopy With Single Vent
- Spun Poly Canopy
- 1-Year Limited Warranty



735700 Pacific Blue Pacific Blue

735701 Forest Green Forest Green

735699 Beige Beige

753127 Black Black

753125 Natural Natural

753126 Navy Navy

NEWLY ADDED UMBRELLAS

Fiberbuilt® Cantilever Acrylic 10' Umbrella Includes 480lb Base

- (8) Aluminum Ribs; Bronze Finished Aluminum Frame And Fittings; Trigger Lift With Crank
- Steel Cross Base For (4) 80 Lb. Granite Tiles
- Custom Top Options Include Valance, Alternating Panels, Banding And Logos



793641 Beige Beige

793639 Natural Natural

793642 Black Black

793638 Pacific Blue Pacific Blue

UMBRELLA BASES



Grosfillex
Grosfillex® Resin Umbrella Base With Filling Cap, 35 Lb

116029 Bronze Bronze

762003 White White

762052 Black Black



Grosfillex
Grosfillex® Resin Umbrella Base With Filling Cap, 84 Lb

△ CA Residents, See Warning 1

445693 Black Black

445691 White White



Fiberbuilt
Fiberbuilt™ Concrete Umbrella Base, 55 Lb

753116 Black Black

753117 Beige Beige

753115 Champagne Bronze Champagne Bronze

⚠ WARNING 1: This product can expose you to chemicals including Silica, crystalline, which [is] are known to the State of California to cause cancer. For more information go to www.P65Warnings.ca.gov.

3400 Cumberland Boulevard SE
Atlanta, GA 30339

PRESORTED
STANDARD
U.S. POSTAGE
PAID
HD SUPPLY

CUSTOMER NUMBER

MY POOL TESTING™

The right products for your pool.

- Learn what chemicals your pool needs.
- See recommended products and dosing.
- Save your results online for easy reference.
- Available through our free, online tool.

Visit hdsupplysolutions.com/poolwatertesting



3 EASY WAYS TO ORDER

 **MOBILE APP**

 **1.800.431.3000**

 **hdsupplysolutions.com**