

**IN-STOCK
ALTERNATIVES
FOR TRICHLOR &
DICHLOR**

POOLS GUIDE

Our Solutions To Supply Shortages

We have in-stock alternatives to impacted products.
See pages 2-3

5 Easy Steps To A Clean Pool

Color-coded AquaGuard® products make it easy.
See pages 2-6

Improve Your Pool Maintenance Skills

Learn about our training classes.
See page 6

Pool Furniture In Every Style

We've got you covered.
See pages 14-15

Need Pool Care Advice From An Expert?

Call 1.800.SOS.POOL.

K-2005

Complete (high)

DPD Chlorine (1-10 ppm), DPD Bromine (2-20 ppm),
pH with Acid & Base Demand, Total Alkalinity,
Calcium Hardness, Cyanuric Acid

 **taylor**

the most trusted name in water testing

STEP

Balanced water is critical to pool quality and swimmer comfort.

Optimum Balance Levels:

- pH Balance: 7.4-7.6
- Alkalinity: 80-120 ppm
- Calcium Hardness: 200-400 ppm

Why You Need To Balance Your Pool:

- To maximize chlorine effectiveness
- To prevent eye and skin irritation
- To limit pool equipment damage

Salt Pool
Compatible



Treats the following:



See pages 4-5 for troubleshooting tips.

BALANCE THE WATER

Balance Is Important

Balancing may be difficult this year because of the shortage of stabilized trichlor and dichlor. Muriatic acid can help lower your pool's pH if it is too high. Products marked with a ★ are an alternative to traditional balancing products.



AquaGuard® 1 Gallon Muriatic Acid ★

- Powerful pH Reducer Helps Prevent Scaling Caused By Calcium-Based Chlorine And/Or Hard Water
- Ready To Use
- Not Available In All Regions

116608
Pkg Of 2



AquaGuard® 1 Gallon Calcium Hardness Reducer

- Reduces The Calcium Hardness Of Pool Water So That A Proper pH Balance May Be Obtained
- Reduces Scale Formation

116604



AquaGuard® 8 Lb Stabilizer Conditioner

- Shields Chlorine From The Destructive Effects Of Sunlight
- Reduces Chlorine Consumption
- Essential If Liquid Or Calcium-Based Chlorines Are Used

117943



AquaGuard® 1 Gallon Metal Out

- Prevents And Stops The Growth Of Metal Stains, Discoloration And Scale Formation
- Treats Up To 40,000 Gallons

116607



AquaGuard® 30 Lb pH Pail

- Fast-Dissolving Granular Pool Acid
- Adjusts pH And Alkalinity Quickly And Safely

116601

pH Up
Soda Ash
116600

pH Down
Pool Acid
116601



AquaGuard® 30 Lb Alkalinity Booster Pail

- Buffers Pool Water For Better pH Control
- Increases Total Alkalinity Of Pool Water And pH Of Pool Water
- Fast-Dissolving Sodium Bicarbonate

116602



AquaGuard® 25 Lb Calcium Hardness Increaser

- Prevents Corrosion Of Pool Surface And Equipment Caused By Low Calcium Levels
- Fast-Dissolving

208511

2

STEP

Chlorine makes the water clean and clear for swimmers.

Why You Need To Chlorinate Your Pool:

- Chlorine disinfects the water
- It kills both bacteria and algae
- 2.0-4.0 ppm levels are optimal

Salt Pool
Compatible



Treats the following:



See pages 4-5 for troubleshooting tips.

STABILIZED CHLORINE

National Shortage

There is a national shortage of stabilized trichlor and dichlor, which means it may be difficult for you to find the products you usually use to chlorinate your pool. Products marked with a ★ use alternative forms of chlorine, like liquid chlorine, salt, and calcium hypochlorite.



Pool Time 35 Lb 3" Chlorinating Tablets

- 99% Trichlor
- 3-in-1 Formula
- Kills Bacteria And Controls Algae
- Built-in Sunlight Protector
- Individually Wrapped
- Slow Dissolving For Long Lasting Sanitizing

208424



AquaGuard® 50 Lb Dichloro All-In-One Chlorinating Granules

- Superconcentrated Formula
- 99% Sodium Dichlor
- Will Not Cloud Water, Raise pH Or Create Calcium Deposits On Tile
- Fast-Dissolving

116613

ALTERNATIVE FORMS OF CHLORINE



CASE
OF 3

AquaGuard® 1 Gallon Liquid Chlorine ★

- Antimicrobial, Kills Algae And Bacteria
- Will Not Cloud Pool Water
- Safe For All Types Of Pools
- Easy To Use

114222



DISSOLVES
INSTANTLY

AquaGuard® 95 Lb Blended Calcium Hypochlorite ★

- 59.5% Calcium Hypochlorite
- Swimming Pool Water Oxidizer
- Great For Shocking Swimming Pool Water
- Kills Bacteria, Destroys Organic Contaminants, Controls Algae
- Brand May Vary By Region

114008



AquaGuard® 40 Lb Pool Salt ★

- For Use In Pools And Spas With Salt Chlorinators
- Brands May Vary By Region
- Not Available In All Markets

116038



AquaGuard® 50 Lb Bromine Tablets For Pools And Spas ★

- Perfect For Indoor Pools, Spas And Tubs
- Slow-Dissolving For Controlled Release
- Sanitizes And Prevents Algae Without Chlorine Odor

116615

3
STEP

Periodic shocking removes waste materials like suntan oils, perspiration, body oils, and other organic waste.

For best results, balance pH to 7.4-7.6 before shocking.

Why You Need To Shock Your Pool:

- To bring up chlorine and free chlorine levels
- To disinfect the water
- To restore water clarity

Salt Pool
Compatible



Treats the following:

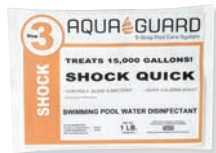


See below for troubleshooting tips.

SHOCKING THE WATER

Add Shock Quick Now, Swim 15 Minutes Later

Use Shock Quick as a weekly shock treatment, and swimmers can enter the pool after just 15 minutes.



AquaGuard® 1 Lb Trichloro Shock Quick

- Dissolves Instantly
- Clears And Clarifies Pool Water
- Reduces Other Chemical Needs
- Each Packet Treats 15,000 Gallons
- Trichloro-Based Formula

116619
Pkg Of 30



AquaGuard® 1 Lb Trichloro Super Shock Quick

- Quick Chemical Boost
- Controls Algae And Bacteria
- Superconcentrated Formula
- Reduces Other Chemical Needs
- Each Packet Treats 24,000 Gallons

116647
Pkg Of 24



AquaGuard® 50 Lb Sodium Persulfate Non-Chlorine Shock

- Eliminates Odor And Oxidizes Organic Buildup
- Does Not Affect Chlorine Levels, So Swimmers Can Enter Pool Immediately After Application
- Helps Clarify Water And Improve Filtration

116621



AquaGuard® 1 Lb Calcium Hypochlorite Shock

- 59.5% Calcium Hypochlorite
- Swimming Pool Water Oxidizer
- Great For Shocking Swimming Pool Water
- Kills Bacteria, Destroys Organic Contaminants, Controls Algae
- Convenient 1 Lb Bags
- Brand May Vary By Region

114009
Case Of 24

Troubleshooting Tips



CLOUDY WATER

Clarifiers (116630 and 116631) will aid in removing particles, but the source of the problem should also be determined.

1. Check filtration system for malfunction.
2. Test pH and total alkalinity and adjust if necessary. Adjust alkalinity with Alkalinity Booster (116602/116636). Adjust pH using pH Up (116600/116636) or pH Down Dry Acid (116601).
3. If total alkalinity and pH are correct, shock pool water with Shock Quick Pouch (116619/116647) or Non-Chlorine Shock Treatment (116621) and run the pump on a longer cycle.



EYE/SKIN IRRITATION

pH is out of proper range.

1. Test pH and adjust using pH Up (116600/116636) or pH Down Dry Acid (116601).
2. If pH is correct, shock pool water with Shock Quick Pouch (116619/116647) or Non-Chlorine Shock Treatment (116621) and run the pump on a longer cycle.



CHLORINE ODOR

Chloramines present due to inadequate levels of free chlorine.

1. Test pH and adjust using pH Up (116600/116636) or pH Down Dry Acid (116601).
2. Shock pool water with Shock Quick Pouch (116619/116647) or Non-Chlorine Shock Treatment (116621) and run the pump on a longer cycle.



GREEN ALGAE

Caused by inadequate chlorine levels.

1. Brush algae off pool surfaces.
2. Test pH and adjust using pH Up (116600/116636) or pH Down Dry Acid (116601).
3. Shock pool water with Shock Quick Pouch (116619/116647) or Non-Chlorine Shock Treatment (116621), using three times the normal shock dosage.
4. Run the pump on a longer cycle.
5. Treat with Green Algaecide (116625).

STEP

Algaecides work hand in hand with chlorine and shock treatments to prevent and remove algae and bacteria buildup.

To treat algae, you must first identify the type of algae present, and then use the task-specific algaecide to prevent or treat the problem.

When To Apply Algaecides:

- When visible algae is present
- As part of a routine maintenance program
- Prior to the start of pool season

Salt Pool
Compatible



Treats the following:



See below for troubleshooting tips.

SELECT ALGAE CONTROL BASED ON THE TYPE OF ALGAE

AquaGuard® 1 Gallon Algaecide And Clarifier

- Ready-To-Use
- Combination Algaecide And Clarifier For All Pool Types
- Treats Up To 53,000 Gallons (Per Gallon)
- Nontoxic, Nonfoaming

116623
Case Of 6



AquaGuard® 1 Gallon Green Algaecide

- Concentrated Formula
- Most Effective Against Green Algae
- Treats Up To 320,000 Gallons
- Nontoxic, Nonfoaming

116625



AquaGuard® 1 Gallon Phosphate Remover

- Concentrated Formula
- Eliminates Phosphates, Which Are The Food Source For Algae
- Impedes The Ability Of Algae To Grow

116627



AquaGuard® 10 Lb Black Algaecide

- Highly Concentrated Formula
- Most Effective On Black Algae
- Slow-Dissolving
- Will Not Raise pH

116628



AquaGuard® 1 Gallon 60% Algaecide

- Concentrated Formula
- Top-Selling Premium Algaecide In The Industry
- Nontoxic, Nonfoaming, Nonmetallic, Poly Blend
- Treats And Prevents All Types Of Algae

116624



AquaGuard® 1 Gallon Mustard Algaecide

- Concentrated Formula
- Effective For Treatment And Prevention Of Mustard Algae
- Treats Up To 256,000 Gallons

116626



Troubleshooting Tips



BROWN/MUSTARD ALGAE

Appears in patches. It brushes away easily, but reappears quickly.

1. Brush algae off pool surfaces.
2. Test pH and adjust using pH Up (116600/116636) or pH Down Dry Acid (116601).
3. Shock pool water with Shock Quick Pouch (116619/116647) or Non-Chlorine Shock Treatment (116621), using three times the normal shock dosage.
4. Run the pump on a longer cycle.
5. Treat with Mustard Algaecide (116626).



BLACK ALGAE

Appears as black spots. Note: These instructions and Black Algaecide may only be used on unpainted, concrete-type pools.

1. Brush pool surfaces with wire algae brush.
2. Test pH and adjust using pH Up (116600/116636) or pH Down Dry Acid (116601).
3. Shock pool water with Shock Quick Pouch (116619/116647) or Non-Chlorine Shock Treatment (116621), using three times the normal shock dosage.
4. Run the pump on a longer cycle.
5. Treat with Black Algaecide (116628) and use Algaecide 60% Concentrate (116624) for maintenance.



BLUE/GREEN WATER

Water looks blue/green.

1. Test pH and adjust using pH Up (116600/116636) or pH Down Dry Acid (116601).
2. Use Ultra Clarifier (116631) and vacuum any fallout to avoid staining.



SAFE FOR
SALTWATER POOLS

All AquaGuard® chemicals are compatible with saltwater systems.

5 STEP

Clarifiers keep your pool crystal clear by combining small particles into large ones for easy filter removal.

When To Use Clarifiers:

- When water is cloudy
- After algaecide treatment
- Prior to the start of pool season

Salt Pool
Compatible



Treats the following:



See pages 4-5 for troubleshooting tips.

CLARIFY THE WATER

AquaGuard® 1 Gallon Spa Water Defoamer

- Eliminates And Prevents Foaming In Spas When Spa Jets Are In Use
- Safe For All Types Of Spas

116634



AquaGuard® 1 Gallon Ultra Pool Water Clarifier

- Clears Cloudy Water
- Use 2 Oz Per 10,000 Gallons

116631



AquaGuard® 1 Gallon Pool Water Clarifier

- Treats Cloudy Or Discolored Water
- Settles Particles To Pool Bottom For Easy Vacuuming And Filtration

116630



AquaGuard® 1 Gallon Tile And Spa Cleaner

- Dissolves Scale And Oils On Ceramic, Porcelain And Fiberglass Pools
- Clings To Surfaces For Easy Cleaning
- Easy Rinse Formula

116632

Super-Concentrated
Formula Treats Up To
640,000 Gallons



AquaGuard® 1 Gallon Filter Cleaner And Degreaser

- Safe For All Types Of Filters
- Removes Grime, Oil And Organics
- Helps Restore Filter Efficiency

116633



Improve Your Pool Care Skills With Our Training Classes

To view our training webinars, download the HD Supply Insider app and filter the Training Library to "Pools".

Are You Prepared For The Shortages?

Because of the national shortage of stabilized trichlor and dichlor, HD Supply has training to teach customers new ways to maintain their pools that use alternative chemicals to yield the same results.

Swimming Pool Maintenance Class

Learn how to professionally manage and maintain one of your property's most valuable amenities—the swimming pool. This three-hour class is designed to give you an overview of daily pool operations and attendance is free.

Topics Covered

- Chemical testing and water balance
- Filtration systems and mechanical maintenance
- Liability and safety aspects of pool management
- Chemical safety

PHTA® Certified Pool Operator® Certification Class*

Learn the skills to maintain your pool and eliminate expensive outsourcing costs. Upon successful completion of this in-depth, two-day course, you will earn a certification that is recognized by the Pool & Hot Tub Alliance (PHTA®, formerly NSPF® and APHA®). HD Supply provides the training and proctors the exam.

Topics Covered

- Pool calculations and formulas
- Chemical dosage formulas
- Disinfection (superchlorination)
- Water chemistry and balancing
- Filtration
- Pool safety standards
- Identifying pool hazards
- Understanding federal and state codes

*Course fees apply. A passing score of 75% is required to receive certification.

ENROLL TODAY

For more information, visit hdsupplysolutions.com/training or call 1.800.431.3015, ext. 12465.

Saltwater Pool Care

Saltwater pools rely on salt chlorine generators for sanitization, minimizing the amount of chemicals and chloramine buildup in the water. AquaGuard® Balance, Clarify, Algae Control, and Shock chemicals are compatible with saltwater systems.

How To Maintain A Saltwater Pool:

- Test pool water weekly for free chlorine and pH levels
 - Free chlorine levels should be within 2.0-4.0 ppm
 - Optimal pH level should be within 7.4-7.6
- Use test strips monthly to test pool water for salt, alkalinity, stabilizer, and calcium
- Open and visually inspect cell every three months for maximum performance
- Ensure filter, pump, and skimmer are clean
- Make sure water flow is at optimal levels



All AquaGuard® chemicals are compatible with saltwater pools.



AQUA GUARD®
5-Step Pool Care System



AQUA GUARD®

AquaGuard® 40 Lb Pool Salt

- For Use In Pools And Spas With Salt Chlorinators
- Brands May Vary By Region
- Not Available In All Markets

116038



 **PENTAIR**

Pentair Power Center For Intellichlor IC40 And IC60 Cells

- 110 Vac Or 220 Vac Wiring
- Certified To UL 1081 Standard For Safety And NSF Approved

Mfg #520556

123160



 **PENTAIR**

Pentair Intellichlor Salt Chlorinator Cell

- Intellichlor Salt Chlorinator Uses Common Table Salt To Produce All The Chlorine A Pool Needs Safely, Effectively, And Automatically
- Push-Button Operation And Easy-To-View Displays Enable Fast Checking Of Salt Levels, Cell Cleanliness, Sanitizer Output, And Water Flow
- Automatic Shutoff Feature Protects The Unit And Prolongs Cell Life Under Low Water Temperature Conditions

IC40 Cell
Mfg #520555
123159

IC60 Cell
Mfg #521105
123158

Water Testing

We recommend testing commercial pools daily. Be sure to test pH levels, chlorine, total alkalinity, calcium hardness, and more. Enter your results into our online Pool Water Testing Tool for product recommendations and dosing instructions: hdsuppliesolutions.com/poolwatertesting

Recommended Levels:

- pH: 7.4-7.6
- Chlorine: 2.0-4.0 ppm
- Total Alkalinity: 80-120 ppm
- Calcium Hardness: 200-400 ppm

Test Kit Storage Tips

Test kit reagents typically last only one season and cannot be mixed with another test kit. Be sure to store in a cool, dark location for longer shelf life.



Taylor Pool Test Kit

- DPD
- Tests For Free And Total Chlorine, Bromine, pH, Acid/Base Demand, Total Alkalinity, Calcium Hardness And Cyanuric Acid

3/4 Oz Reagents
115214

2 Oz Reagents
115219



Taylor Commercial Pool Inspector's Test Kit

- 3/4 Oz Reagents
- DPD
- Tests For Free And Total Chlorine, pH, Acid/Base Demand And Cyanuric Acid
- Commonly Used By Health Inspectors For Public Pools/Spas

111316



Lamotte ColorQ Pro 7 Test Kit

- Features A Photometer That Gives You A Digital Reading Of Test Results
- Water-Resistant Carrying Case Provided
- Tests Free Chlorine, Total Chlorine, Bromine, pH, Alkalinity, Calcium Hardness, And Cyanuric Acid
- Uses Liquid Reagents For All Test Factors Except Cyanuric Acid, Which Uses Tablets

706572



Lamotte ColorQ Pro 7 Test Reagent Refill Kit

- Includes One 30 mL Bottle Of DPD 1a Liquid Reagent For Free Chlorine, DPD 1b Liquid Reagent For Free Chlorine
- DPD 3 Liquid Reagent For Total Chlorine, pH Liquid Reagent For pH
- Alkaline Liquid Reagent For Total Alkalinity, CH2 Liquid Reagent For Calcium Hardness
- Also Includes CH1 Liquid Reagent For Calcium Hardness, CYA Testabs For Cyanuric Acid And 5 mL Color 6 Test Tubes

706573



Taylor R-0002-C, Reagent #2 DPD

- Free Chlorine Level Test
- 2 Oz

114622



Taylor R-0001-C, Reagent #1 DPD

- DPD Liquid Chlorine Test
- 2 Oz

114621



Taylor R-0870-I, DPD Powder

- DPD Powder Chlorine Test
- 10 Grams

114265



Taylor R-0004-C, Phenol Red #4

- pH Test
- 2 Oz

114624



Taylor R-0013-C, Cyanuric Acid

- Cyanuric Level Test
- 2 Oz

114633



Clorox Pool And Spa 6-Way Test Strips

- Tests Total Chlorine, Free Available Chlorine/Bromine, pH, Total Alkalinity, Total Hardness, Stabilizer

114119

Pkg Of 50





**More Than 800 Of These
Products Available Online**

PART #	DESCRIPTION
A 114109	Leaf Skimmer - Aluminum Frame Skimmer With Plastic Guard - Quick Lock Handle Attaches To Any Standard Pole
B 114160	Leaf Rake - Aluminum Frame Skimmer With Plastic Guard - Quick Lock Handle Attaches To Any Standard Pole
C 114285	Commercial Leaf Rake - Heavy-Duty Aluminum Frame Skimmer With Plastic Guard - Heavy-Gauge Screen - Quick Lock Handle Attaches To Any Standard Pole
D 114140	18" Curved Metal Back Wall Brush - 1-1/2" Polypropylene Bristles - Quick Lock Handle Attaches To Any Standard Pole
E 116002	10" Stainless Steel Algae Pool Brush
F 114200	19" Professional Vacuum Head - Flexible Construction Allows It To Hug The Curves Of Pool Walls And Floor - Balanced And Weighted To Keep Vacuum Head Submerged - 12 Polyurethane Ball Bearing Wheels - Quick-Lock Handle Fits Any Standard Telescoping Pole - Use With 1-1/2" Vacuum Hose
G 114175	Standard Anodized Aluminum Telescopic Pole - Adjusts From 8 To 16' - Nylon Locking Device - Vinyl Handle Grip
H 114120	1-1/2" x 45' Deluxe Floating Vacuum Hose - UV Resistant - Lightweight - Leakproof Welded End Cuff - Crushproof - Swivel Cuff Rotates At Vacuum Head
I 114116	Swivel Wheel Leaf Bagger - Picks Up Leaves From Bottom Of Pool - Includes An Extra Large Polypropylene Bag - Brass Hose Connection For Added Durability
J 114171	8" Professional Thermometer - Combination Sink Or Float Thermometer - 36" Leash With Anchor Plate - Shatterproof Magnifying Lens - °F And °C Scales
K 123221	Maytronics Dolphin™ C3 Commercial Robotic Pool Vacuum - For Small To Mid-Size Commercial Pools - 60' Patented Swivel Cable - Cycle Time: 1 Or 2.5 Hours - Basic Remote Control - Full Filter Indicator - Fine And Ultra-Fine Cartridges Collect Both Fine Particles And Large Debris - Filter Type: Cartridge - Top Access Filter - Includes Caddy - 2 Year Bumper-To-Bumper Warranty - Mfg #99991073-C3
L 123222	Maytronics Dolphin™ C4 Commercial Robotic Pool Vacuum - For Small To Mid-Size Commercial Pools - 78' Patented Swivel Cable - Cycle Time: 1.5, 2.5 Or 3.5 Hours - Pro Remote Control With Delay Start Feature - Full Filter Indicator - Fine And Ultra-Fine Cartridges Collect Both Fine Particles And Large Debris - Filter Type: Cartridge - Top Access Filter - Includes Caddy - 2 Year Bumper-To-Bumper Warranty - Mfg #99991083-C4
M 166998	24" Life Ring - USCG Approved - White
N 114275	60' Heaving Line With Metal Hanger - Mildew Resistant Polypropylene Rope - Use With 166998 Life Ring
O 114164	Pool Life And Rescue Hook - Use With 167064 Fiberglass Pool Pole - Does Not Include Nuts And Bolts
P 167064	16" Rigid Fiberglass Pool Pole - 1-1/4" Outside Diameter
Q 114195	5 x 9" Blue/White Float - Fits 3/4" Rope - Unsinkable Polyethylene
R 116003	50' Blue/White Pool Rope - 3/4" Diameter Rope - Rope Hooks (114280) Not Included
S 114280	Socket Type Hook With Rope Cleat - For 3/4" Pool Rope - Use With 116003 Rope
T 114194	Sure-Step® Pool Ladder Tread - 18"W - Stainless Steel Bottom With Gray Top

POOL CLEANING PRODUCTS & ACCESSORIES

Exclusive 2-Year Manufacturer's Warranty For Pentair Pumps



PENTAIR



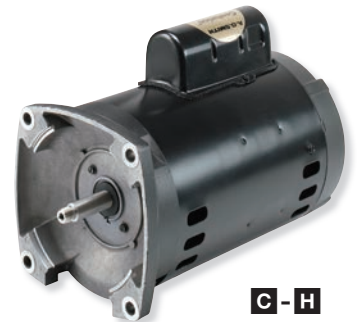
Complete Pump Assemblies

POOL PUMPS

PART #	DESCRIPTION
A 502544	Pentair® IntelliFlo® Variable Speed Pool Pump - High Tech Motor Reduces Noise And Vibration For Greater Efficiency And Longer Life - Variable Speed Technology Provides Significant Energy Efficiency - Provides Energy Savings Compared To Traditional Pumps
B 116906	Pentair® IntelliFlo® Vacuum Release System And Pump - ASME/ANSI A112.19.17 (VGB) Compliant - Detects Blockage And Automatically Shuts Off Pump - Variable Speed Pump Achieves 30-90% Energy Savings - One Size Fits All 0.5 HP To 3.0 HP - Advanced Technology Saves Lives And Saves Money

MOTOR REPLACEMENTS

PART #	UP-RATED SQUARE FLANGE POOL REPLACEMENT MOTOR
C 114198	1 HP Square Flange Pool Replacement Motor - Up-Rated - Single Phase - 115/230 Volt - Service Factor Of 1.25 - Total Output=1.25 HP - Mfg #B853
D 114199	1-1/2 HP Square Flange Pool Replacement Motor - Up-Rated - Single Phase - 115/230 Volt - Service Factor Of 1.1 - Total Output=1.65 HP - Mfg #B854
E 114204	2 HP Square Flange Pool Replacement Motor - Up-Rated - Single Phase - 230 Volt - Service Factor Of 1.1 - Total Output=2.20 HP - Mfg #B855
PART #	FULL-RATED SQUARE FLANGE POOL REPLACEMENT MOTOR
F 114340	1 HP Square Flange Pool Replacement Motor - Full-Rated - Single Phase - 115/230 Volt - Service Factor Of 1.65 - Total Output=1.65 HP - Mfg #B848
G 114345	1-1/2 HP Square Flange Pool Replacement Motor - Full-Rated - Single Phase - 230 Volt - Service Factor Of 1.5 - Total Output=2.25 HP - Mfg #B849
H 114205	2 HP Square Flange Pool Replacement Motor - Full-Rated - Single Phase - 230 Volt - Service Factor Of 1.3 - Total Output=2.60 HP - Mfg #B748



C - H

IMPORTANT NOTE: Always replace the pump seal (114528) when installing a new motor to avoid severe damage to system.

FOR YOUR INFORMATION

Up-Rated? Full-Rated?

Which one do you choose? Motors are rated to operate to listed capacity. When replacing a pump and/or motor on an existing system, it is important to use the correct replacement. That can easily be accomplished by checking your currently installed equipment. Find the motor's nameplate. Locate the HP (horsepower) shown on the nameplate and multiply that by the SF (service factor) shown on the nameplate. The HP times the SF of the replacement motor must be equal to (or greater) than HP times SF of the motor being replaced.

Total Output = Nameplate Horsepower x Service Factor

FVI-Q390



SR Smith.

SR Smith Splash! ADA Compliant Pool Lift

- 360° Rotation For Transfer Safety And Flexibility
- LiftOperator® Intelligent Controller With 24V Battery
- Powder-Coated Stainless Steel And Aluminum Construction
- 300 Lbs Lifting Capacity
- Semi-Permanent Installation

114638

Splash Lift Cover
502576



Aqua Creek Scout Excel Pool Lift

- ADA Compliant
- UI Certified To Pool Lift Safety Standards
- 375 Lbs Weight Capacity
- Whisper Quiet 360° Rotation

202253



S.R. Smith PAL2 Portable Aquatic Lift Chair

- ADA Compliant
- 300 lb. Lifting Capacity
- Powder Coated Stainless Steel And Aluminum
- Able To Be Secured To Deck In Compliance With ADA Portability Rule

532250

ADA Pool Lifts

We carry ADA-compliant pool lifts from the leading national brands, including SR Smith and Aqua Creek.

ADA Regulations:

- ADA requires an accessible means of entry or exit for people with disabilities.
(This is a requirement for hospitality properties.)
- Pools with less than 300 linear feet of pool wall must provide one means of access.
- Pools with more than 300 linear feet of pool wall must provide two means of access.
- Any pool open to the public must comply with ADA pool lift regulation.

Maintenance Tips

Routine lift maintenance and cleaning are essential for ensuring accessibility. Be sure to:

- Check and charge battery daily
- Lubricate all gears on a monthly basis
- Test for normal operation
- Inspect cable connections on a monthly basis
- Inspect for damage
- Use a lift cover when not in use and avoid storing lift near pool chemicals
- Clean seat, lift, etc. regularly

Source: https://www.ada.gov/pools_2010.pdf

HENRY

1 Lb Henry® Underwater Tile Repair

- Use For Underwater Tile Repair In Swimming Pools And Spas
- Allows For Repairs To Be Done Without Draining The Water
- 24-Hour Dry Time
- Use With All Tile Types
- Covers Approximately 2 Sq Ft

807017



INSL-X

Insl-X 1 Gallon Pool Waterborne Paint, White

- Self-Priming Pool Paint
- Can Be Applied To Damp Surfaces, Dries Quickly For Recoating
- Resists Mildew, Algae, Fresh And Salt Water, And Sun Tan Oils
- 1 Gallon Covers Approximately 250-300 Sq Ft, Semi-Gloss Finish
- Environmentally Friendly Low-VOC

230811



INSL-X

Insl-X 1 Gallon Chlorinated Rubber Pool Paint, Ocean Blue

- For New Or Old Concrete Pools
- Durable In Fresh Or Salt Water
- Resists Fading, Fungus, Algae, Abrasion And Alkalis
- See Insl-x Swimming Pool Paint Brochure For Complete Instructions Regarding Application

230806

Case Of 2



RUST-OLEUM
INDUSTRIAL BRANDS

Rust-Oleum® 1 Gallon Acrylic Pool Paint, Marlin Blue

- Excellent Solution When Downtime Is Critical
- Self-Priming Two-Coat System
- Works Best On Clean, Cool And Damp Surfaces
- VOC Compliant

531409



60 Watt PAR-16 Halogen Spa Bulb

- 120 Volt
- Medium Base
- 2,500 Average Hour Life
- 2" Diameter

309012



R-40 500 Watt Clear Swimming Pool Bulb

- 130 Volt
- Medium Base
- 2,000 Average Hour Life
- 5" Diameter

310166



Universal Pool Light Adapter Ring

- #500P Model Adapts To Same Lights That Fit All 500, 500B And 500C Models

170008



22 x 44" Blue Center Stripe Pool Towel

- 6 Lbs/Dozen
- Cam Border
- 100% Cotton
- Hemmed On All Four Sides

206092

Pkg Of 12



24 x 50" Blue Center Stripe Pool Towel

- 10 Lbs/Dozen
- Cam Border
- 100% Ring-Spun Cotton Construction
- Hemmed On All Four Sides

502780

Pkg Of 12



martex

Martex® 24 x 50" Morning Glory Pool Towel

- 10.5 Lbs/Dozen
- Double Dobby Border On One End
- Cotton/Polyester Blend With Ring-Spun Cotton Loops

718451

Pkg Of 12



martex

Martex® 20 x 40" Blue Center Stripe Pool Towel

- 5.5 Lbs/Dozen
- Cotton/Polyester Blend
- Cotton Loops For Maximum Absorbency
- Hemmed On All Four Sides

763499

Pkg Of 12



More Robotic Vacuums Available Online



Pool Sign "No Glassware Allowed In Pool Area"

- Heavy-Duty Polyethylene
- 14 x 10"
- Fade, Tear And Weather Resistant
- Predrilled Holes For Mounting

167120



Pool Sign "Swimming Pool Closed"

- Heavy-Duty Polyethylene
- 12 x 18"
- Fade, Tear And Weather Resistant
- Predrilled Holes For Mounting

167125



Pool/Spa Safety Sign "Caution! No Diving!"

- Heavy-Duty Plastic
- 20 x 14"
- Weather And Tear Resistant
- Predrilled Holes For Mounting

817952



Pool/Spa Safety Sign "Pool Rules"

- Heavy-Duty Plastic
- 28 x 20"
- Weather Resistant
- Predrilled Holes For Mounting
- Complies With State Of Florida Regulations

817955



Pool/Spa Safety Sign "Pool Rules"

- Heavy-Duty Plastic
- 28 x 20"
- Weather Resistant
- Predrilled Holes For Mounting
- Complies With State Of California Regulations

817956



Pool/Spa Safety Sign "Warning No Lifeguard On Duty"

- Heavy-Duty Plastic
- 20 x 28"
- Weather Resistant
- Predrilled Holes For Mounting

817954



Brady® Common Area Sign Kit - Social Distancing

- This Essential Business Kit Contains:
- (2) 10 X 14" Maximum Capacity Signs To Keep Employees And Visitors Informed On The Best Way To Socially Distance
- (2) 7 X 10" Physical Distancing In Practice 6 Feet Minimum Distance Signs To Remind Employees And Visitors Of CDC Guidelines For Social Distancing
- (2) 10 X 7" Please Wash Hands For 20 Seconds Signs To Remind Employees And Visitors To Use Proper Hygiene Practices To Help Stop The Spread Of Germs

124331



HD Supply 10 x 7" in Plastic Social Distancing Sign (Light Blue)

- Lightweight Sign
- Help Enforce Social Distancing Practices
- 2 Adhesive Strips included

124189



Custom Pool Pass Tags

- Bright Colors Identify Residents Quickly, Have Different Colors For Residents and Guests
- Works With Most Fasteners
- Sold In Packs Of 100

Red
272239
Blue
271909

Green
272048



Pool Pass

- Quickly Identifies Pool Members
- Laminated Plastic Material Won't Chip, Fade Or Peel
- Sold In Packs Of 100

Paradise
272295
Bubbles
735936

Palm Trees
272169



Stock Pool Pass Bracelets

- Silicone Wristbands Are Flexible And Comfortable
- Debossed "Pool Pass" Never Wears Off
- Highly Visible As Proof Of Membership
- Adult Size
- 8L x 1/2W x 1/16" D
- Sold In Packs Of 100

PART #	COLOR
116724	Blue
116726	Green
116728	Orange
116730	Red
116732	White
116734	Pink
116736	Yellow

Grosfillex

Grosfillex® Sunset Sling Chaise Lounge

- Made Of Grosfillex®'s New Technopolymer With Air Molding Technology (AMT) To Provide Weather Resistance And Durability With The Strength Of Metal
- Recessed Wheels For Ease Of Relocation

Pkg Of 2



116567
Platinum Gray Sling/
Solid Gray Frame

116016
Gray Sling/Volcanic
Black Frame

116017
White Sling/Glacier
White Frame

116015
Cognac Sling/Fusion
Bronze Frame

Grosfillex® Sunset Stacking Armchair

- Made Of Grosfillex®'s New Technopolymer With Air Molding Technology (AMT) To Provide Weather Resistance And Durability With The Strength Of Metal
- Microban® Anti-Microbial Treatment To Resist Mold And Mildew

Pkg Of 4



116565
Gray Sling/
Platinum Gray Frame

116011
White Sling/Glacier
White Frame

116010
Gray Sling/Volcanic
Black Frame

116009
Cognac Sling/Fusion
Bronze Frame

Grosfillex® 36" Square Sunset Table

- Made Of Durable, Uniquely Finished High-Pressure Laminate Sheet For A Lasting Dramatic Effect
- Umbrella Hole With Protective Ring And Plug For Standard 1-1/2" Umbrella Pole
- Leg Levelers For Uneven Surfaces
- Nylon Footpads To Resist Wear



116594
Lava Top/Fusion
Bronze Legs

116592
Concrete Top/
Volcanic Black Legs

116595
White Top/Glacier
White Legs



Sunset Collection Sling
Chaise Lounges are
stackable for easy storage.

Grosfillex® Sunset Towel Valet

- Use Both Indoors And Outdoors
- UV And Weather-Resistant
- Easily Cleaned With Soap And Water
- Towels Not Included



128786
Gray/Volcanic
Black Frame

Gray/Volcanic
Black Frame

128788
Single
70H x 24W x 25"D

128786
Double
70H x 48W x 25"D

128782
Triple
70H x 72W x 25"D

Gray/Platinum
Gray Frame

128789
Single
70H x 24W x 25"D

128781
Double
70H x 48W x 25"D

128784
Triple
70H x 72W x 25"D

Cognac/Fusion
Bronze Frame

128785
Single
70H x 24W x 25"D

128783
Double
70H x 48W x 25"D

128787
Triple
70H x 72W x 25"D

Grosfillex® Bahia Chaise Lounge

- Twice As Resistant To UV Degradation As Ordinary Resin Chaises
- Rated To 300 Lb Resistance To Breakage Under Static Load
- Recessed Rollaway Wheels
- 4-Position Adjustable Back; Stackable

Pkg Of 6



762002
White

762057
Sandstone

Grosfillex® Pacific Fanback Chair

- Solid One-Piece Molded Construction
- Fanback Design
- Stackable
- Glossy Finish

Pkg Of 4



762054
Sandstone

762000
White

Grosfillex® Ibiza 46" Round Table

- Tulip Resin Base With Broad Span For Increased Stability
- 46" Dia x 29"H



763278
Sandstone

762001
White



Most popular colors in stock:

- Pacific Blue
- Beige
- Forest Green



Fiberbuilt™ 7.5' Crank Garden Umbrella, Tilt

- Flexible Fiberglass Ribs
- Nylon Joints, Hubs, Finials And End-Tips
- Powder Coated Finish
- Valance Style Canopy
- Vinyl Coated Weave Canopy
- 1-Year Limited Warranty



Pacific Blue

Beige

Navy Blue

Black

Natural

735704 Forest Green

753122 Navy Blue

735703 Pacific Blue

753123 Black

735702 Beige

753121 Natural

Fiberbuilt™ Chaise Lounge Cushion

- 22W x 74L x 2.5"H
- Hinged At 30°
- Spun Poly Fabric
- Knife Edge
- Blown Fill
- Ties At Hinge



Pacific Blue

Beige

Navy Blue

Black

Natural

753109 Forest Green

753112 Navy Blue

753110 Pacific Blue

753114 Black

753113 Beige

753111 Natural

Fiberbuilt™ Custom Cushion Channel Chaise

- 23W x 75L x 3.5"H
- Sunbrella Spectrum Fabric
- Adds Comfort To Any Outdoor Seating
- Standard Outdoor Foam
- Made In The USA
- All Cushions Are Manufactured With High Quality Production Methods



Forest Green

Natural

Antique Beige

Terra Cotta

194629 Pacific Blue

753128 Antique Beige

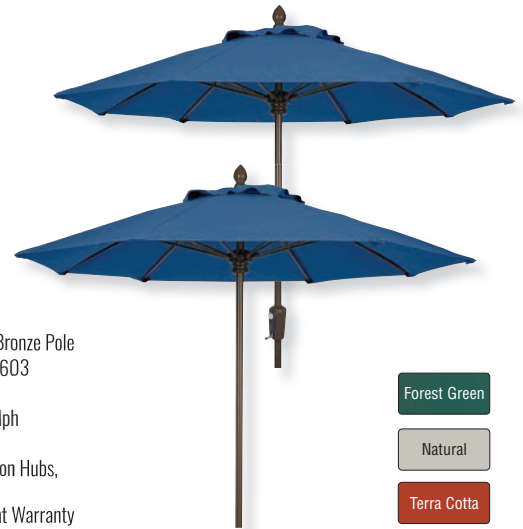
194628 Forest Green

753129 Terra Cotta

194627 Natural

Fiberbuilt™ 7.5' Push-Up Or Crank Market Umbrella

- Contract Quality
- 1.5" Diameter 2-Piece Bronze Pole
- Outdura Spun Acrylic 8603
- Marine Grade Fabric
- Wind Tested Over 50 Mph
- Made In The USA
- (8) Fiberglass Ribs, Nylon Hubs, Joints And End-Tips
- 5-Year Rib Replacement Warranty



Forest Green

Natural

Terra Cotta

Antique Beige

752496 Push-Up Pacific Blue

752499 Crank Pacific Blue

752494 Push-Up Forest Green

752497 Crank Forest Green

752495 Push-Up Natural

752498 Crank Natural

753097 Push-Up Terra Cotta

753100 Crank Terra Cotta

753099 Push-Up Antique Beige

753102 Crank Antique Beige

Fiberbuilt™ 55 Lb Concrete Umbrella Base

- Black Stem And Trim
- Accommodates Up To 1.75" Diameter Pole
- Some Assembly Required



Black

Beige

753115 Champagne

753116 Black

753117 Beige

3400 Cumberland Boulevard SE
Atlanta, GA 30339

PRESORTED
STANDARD
U.S. POSTAGE
PAID
HD SUPPLY

CUSTOMER NUMBER

© 2022 HDS IP Holding, LLC. All Rights Reserved. For our terms and conditions, visit hdsupplysolutions.com/terms.

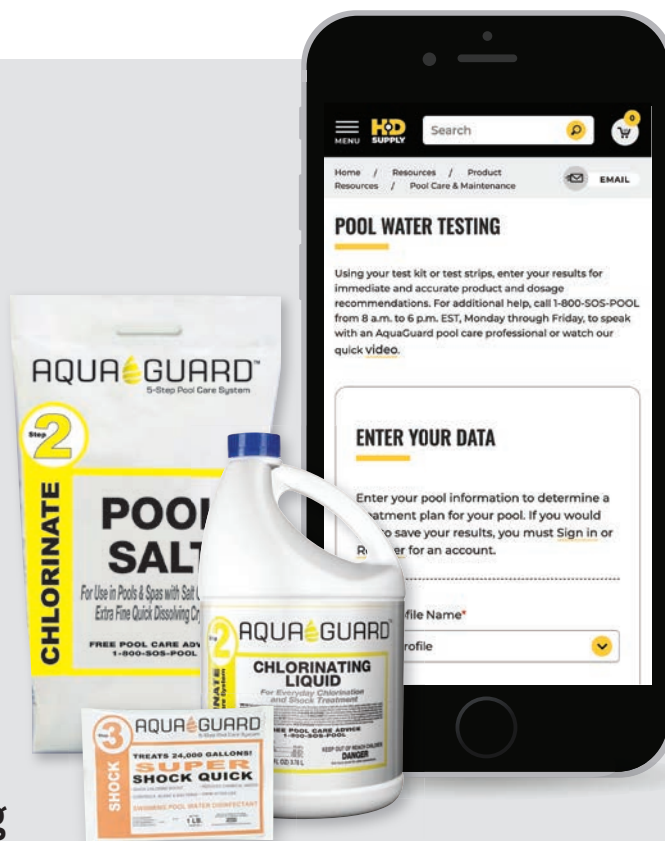
22-22356

OUR ONLINE TOOL MAKES POOL CARE EASY

Take the guesswork out of pool maintenance.
Our new online pool water testing tool lets you:

- Easily track your pool's chlorine, alkalinity, pH, acid, and calcium levels
- See recommended products and dosing instructions based on your results
- Add recommended AquaGuard® products to your shopping cart

Visit hdsupplysolutions.com/poolwatertesting



3 EASY WAYS TO ORDER



MOBILE APP



1.800.431.3000



hdsupplysolutions.com